

RAIL ACCESSIBLE SITE FOR LEASE/SALE

± 12.5 ACRES FOR LEASE/± 27.5 ACRES FOR SALE

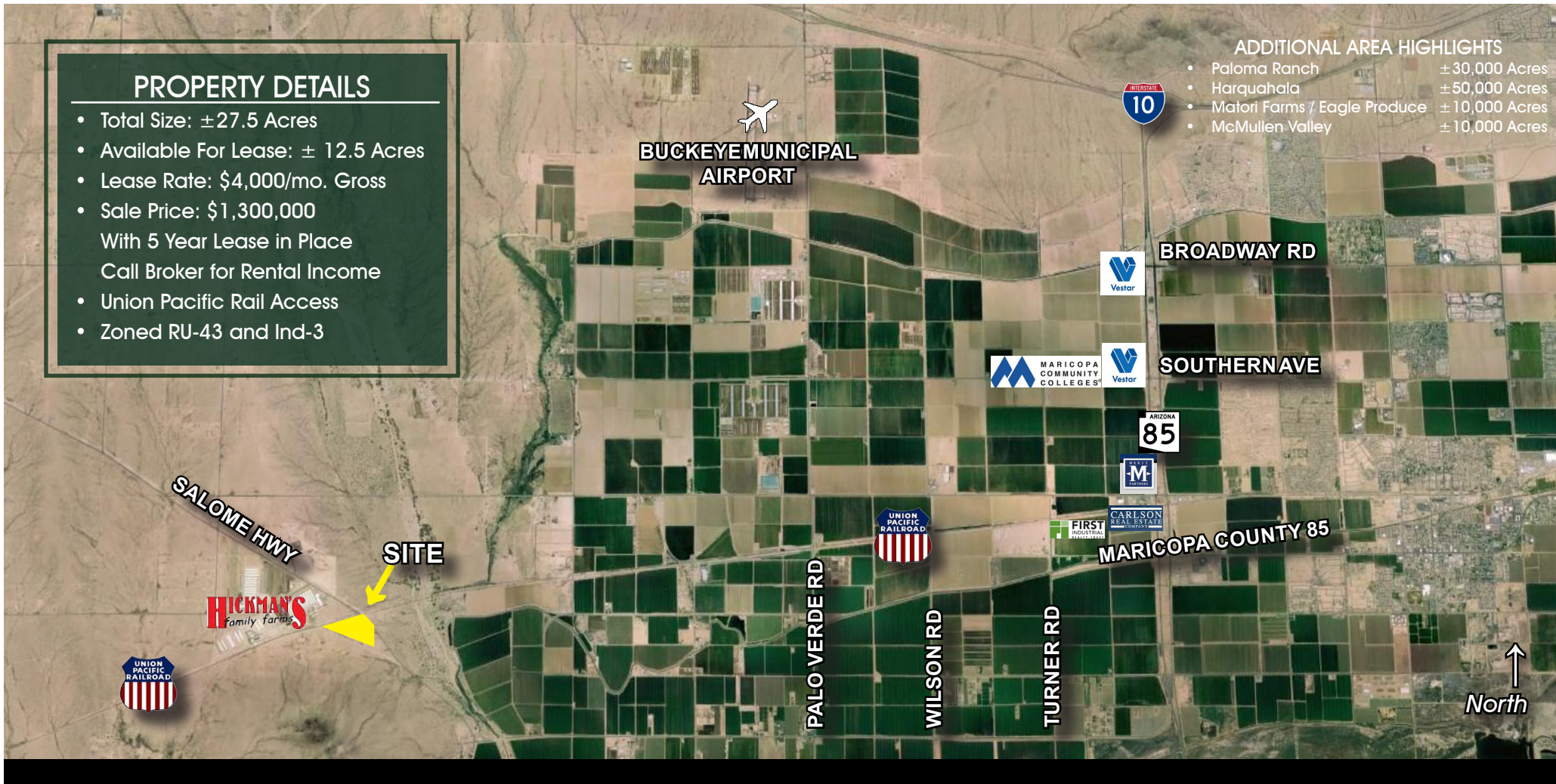
32105 W. Salome Hwy Maricopa County, AZ 85322

PROPERTY DETAILS

- Total Size: ± 27.5 Acres
- Available For Lease: ± 12.5 Acres
- Lease Rate: \$4,000/mo. Gross
- Sale Price: \$1,300,000
- With 5 Year Lease in Place
- Call Broker for Rental Income
- Union Pacific Rail Access
- Zoned RU-43 and Ind-3

ADDITIONAL AREA HIGHLIGHTS

- Paloma Ranch ± 30,000 Acres
- Harquahala ± 50,000 Acres
- Matori Farms / Eagle Produce ± 10,000 Acres
- McMullen Valley ± 10,000 Acres



Jeff Hays
 D (480) 889.2552
 M (602) 373.8800
 jhays@cpiaz.com



COMMERCIAL PROPERTIES INC.

Locally Owned. Globally Connected. CORFAC International

The information contained herein has been obtained from various sources. We have no reason to doubt its accuracy; however, J & J Commercial Properties, Inc. has not verified such information and makes no guarantee, warranty or representation about such information. The prospective buyer or lessee should independently verify all dimensions, specifications, floor plans, and all information prior to the lease or purchase of the property. All offerings are subject to prior sale, lease, or withdrawal from the market without prior notice.

RAIL ACCESSIBLE SITE FOR LEASE/SALE

± 12.5 ACRES FOR LEASE/± 27.5 ACRES FOR SALE
32105 W. Salome Hwy Maricopa County, AZ 85322



Jeff Hays
D (480) 889.2552
M (602) 373.8800
jhays@cpiaz.com

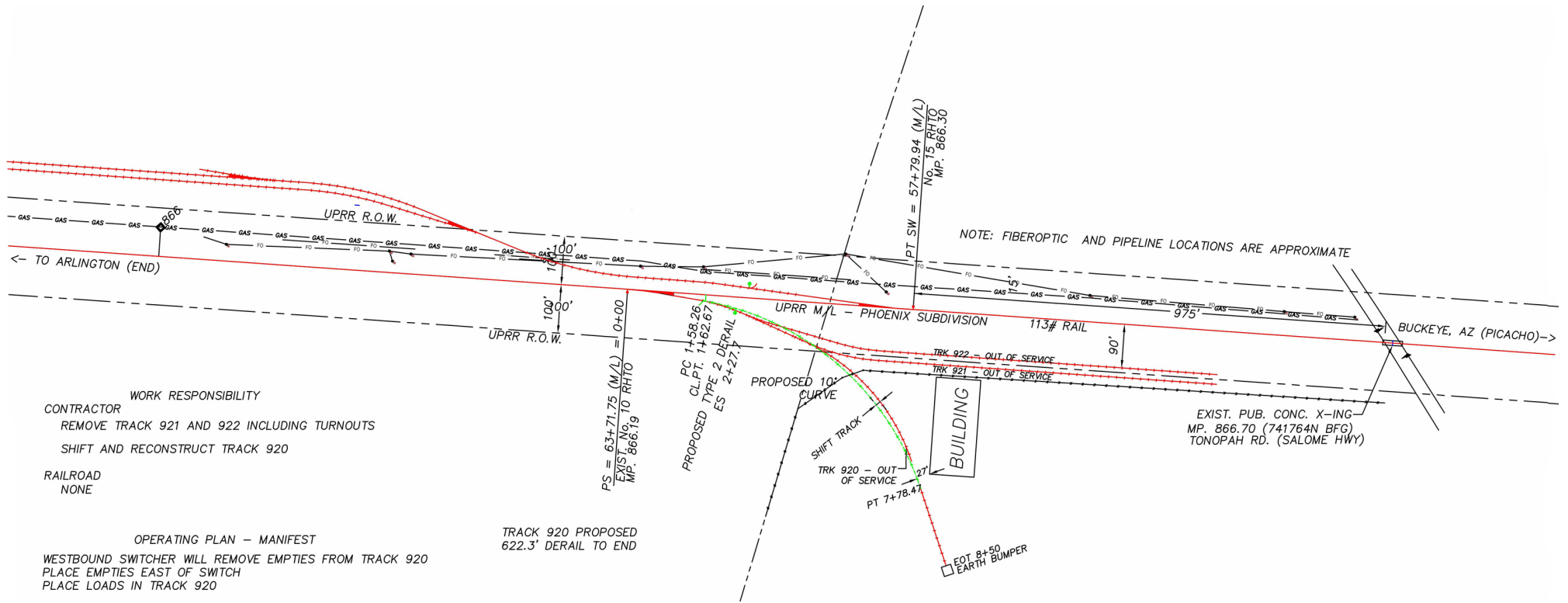
 **COMMERCIAL PROPERTIES INC.**
Locally Owned. Globally Connected. CORFAC International

The information contained herein has been obtained from various sources. We have no reason to doubt its accuracy; however, J & J Commercial Properties, Inc. has not verified such information and makes no guarantee, warranty or representation about such information. The prospective buyer or lessee should independently verify all dimensions, specifications, floor plans, and all information prior to the lease or purchase of the property. All offerings are subject to prior sale, lease, or withdrawal from the market without prior notice.

RAIL ACCESSIBLE SITE FOR LEASE/SALE

± 12.5 ACRES FOR LEASE/± 27.5 ACRES FOR SALE

32105 W. Salome Hwy Maricopa County, AZ 85322



Jeff Hays
 D (480) 889.2552
 M (602) 373.8800
 jhays@cpiaz.com

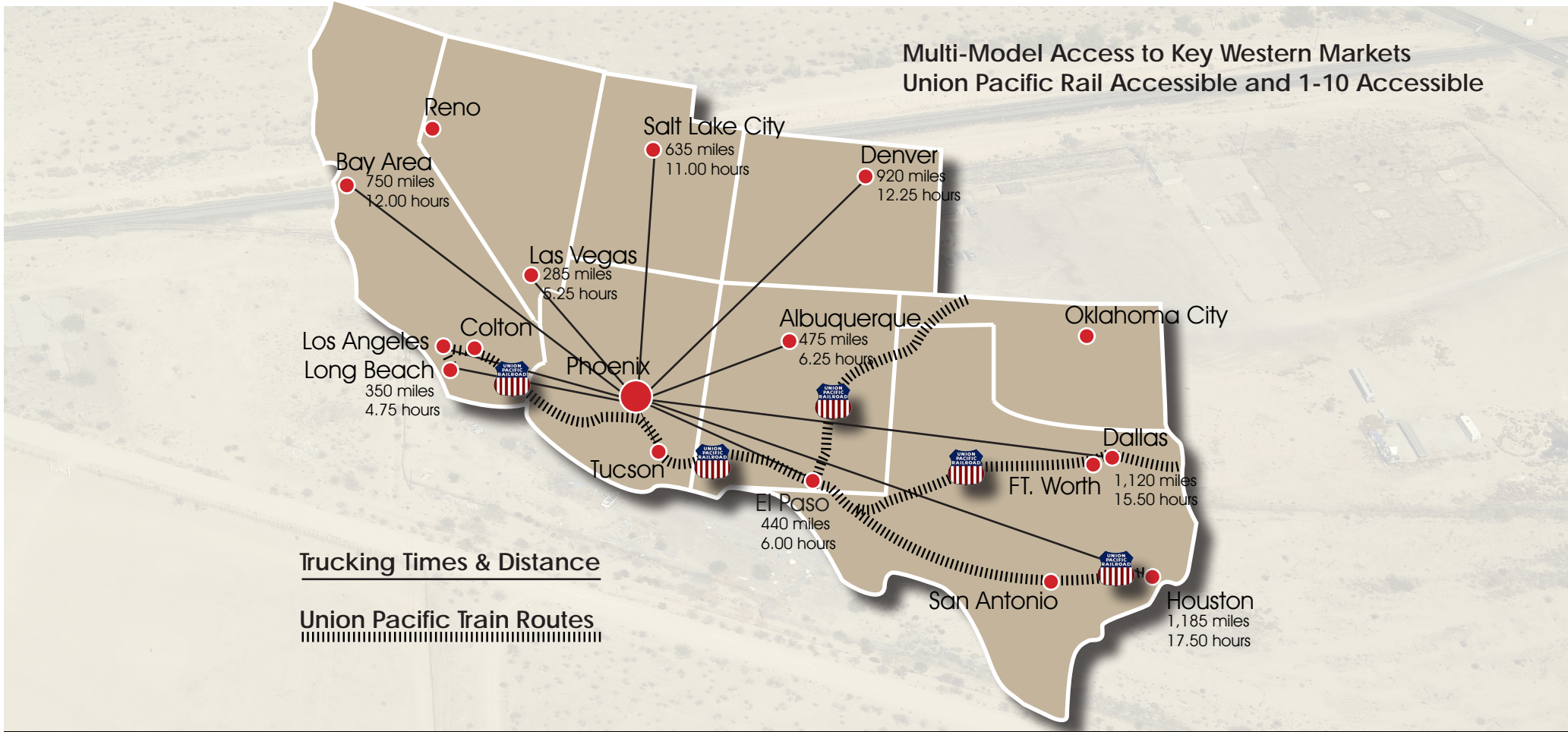


The information contained herein has been obtained from various sources. We have no reason to doubt its accuracy; however, J & J Commercial Properties, Inc. has not verified such information and makes no guarantee, warranty or representation about such information. The prospective buyer or lessee should independently verify all dimensions, specifications, floor plans, and all information prior to the lease or purchase of the property. All offerings are subject to prior sale, lease, or withdrawal from the market without prior notice.

RAIL ACCESSIBLE SITE FOR LEASE/SALE

± 12.5 ACRES FOR LEASE/± 27.5 ACRES FOR SALE

32105 W. Salome Hwy Maricopa County, AZ 85322



Jeff Hays
 D (480) 889.2552
 M (602) 373.8800
 jhays@cpiaz.com

 **COMMERCIAL PROPERTIES INC.**
 Locally Owned. Globally Connected. CORFAC International

The information contained herein has been obtained from various sources. We have no reason to doubt its accuracy; however, J & J Commercial Properties, Inc. has not verified such information and makes no guarantee, warranty or representation about such information. The prospective buyer or lessee should independently verify all dimensions, specifications, floor plans, and all information prior to the lease or purchase of the property. All offerings are subject to prior sale, lease, or withdrawal from the market without prior notice.