

# PIERPONT COMMONS

4858 E BASELINE RD | SUITE 103 | MESA, AZ 85206

±1,987 SF | FOR SALE



## EXCLUSIVE CONTACTS:

Matt Zaccardi

M: 480.966.7625

D: 602.561.1339

mzaccardi@cpiaz.com



**COMMERCIAL PROPERTIES INC.**

Locally Owned. Globally Connected. CCIFAC International

TEMPE: 2323 W. University Drive, Tempe, AZ 85281 | 480.966.2301  
SCOTTSDALE: 8777 N. Gainey Center Dr., Suite 245, Scottsdale, AZ 85258 | www.cpiaz.com



## Building Information

Address	4858 E Baseline Rd Mesa, AZ 85206
Year Built	2004
Parcel	APN: 140-69-048

## Suite Details

Suite 103	±1,987 SF
Sale Price	\$375,000 (\$188 PSF)

## Demographics

	1 MI	3 MI
Population	10,996	126,111
Households	4,235	49,423
Average Age	33.7	40.2
Average HH Income	\$93,099	\$86,512

The information contained herein has been obtained from various sources. We have no reason to doubt its accuracy; however, J & J Commercial Properties, Inc. has not verified such information and makes no guarantee, warranty or representation about such information. The prospective buyer or lessee should independently verify all dimensions, specifications, floor plans, and all information prior to the lease or purchase of the property. All offerings are subject to prior sale, lease, or withdrawal from the market without prior notice. Effective 11 26 19

## Property Features

- Located Adjacent to the Banner Gateway Medical Center
- Just off the US 60 Freeway
- Layout Caters to the Office User Looking for a Collaborative Environment



Suite 103

### Exclusive Contact:

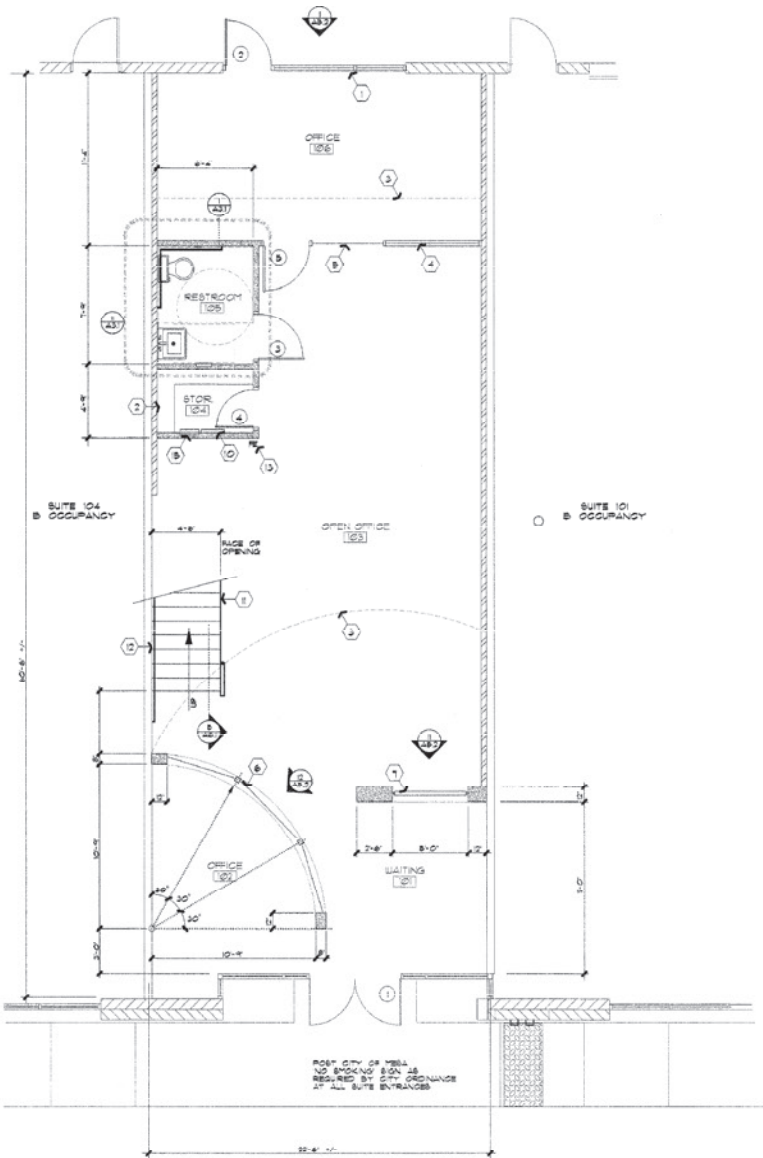
**Matt Zaccardi**  
M: 480.966.7625  
D: 602.561.1339  
mzaccardi@cpiaz.com



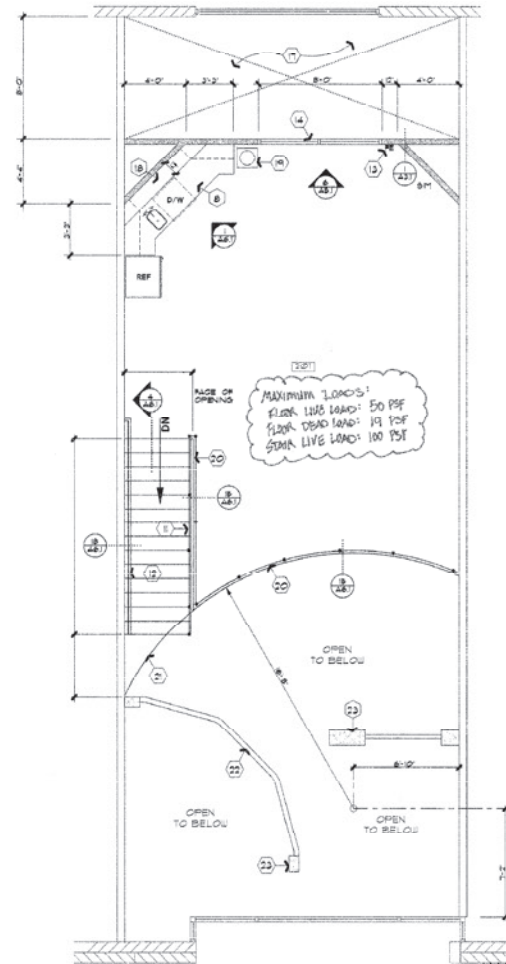


## Suite Details

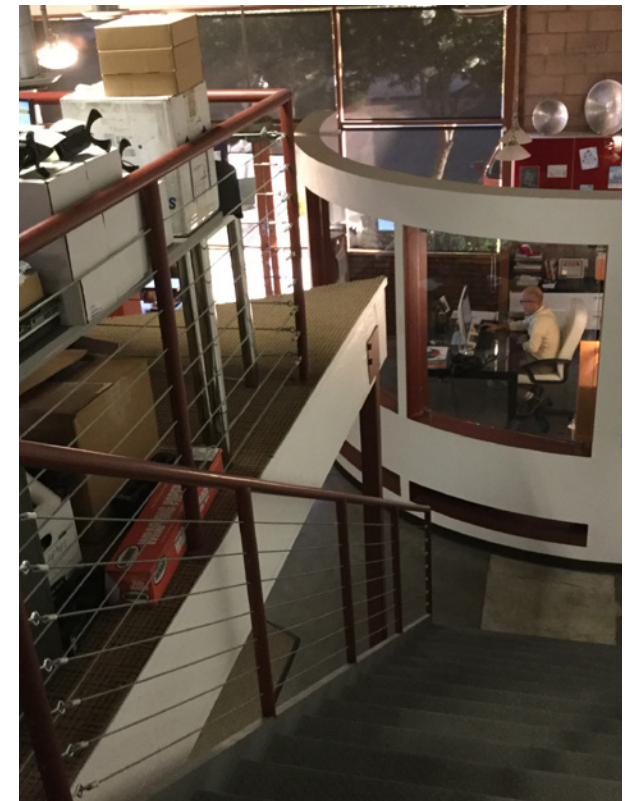
Suite 103	± 1,987 SF
Reception	Yes
Restrooms	1
Bullpens	2
Offices	1
Conference Room	1
Break Room	1



 **FIRST FLOOR PLAN**  
SCALE 1/4"=1'-0"



 **SECOND FLOOR PLAN**  
SCALE 1/4"=1'-0"





# Location & Amenities



THE COMMONS AT PIERPONT  
4838 EAST BASELINE ROAD, MESA, ARIZONA