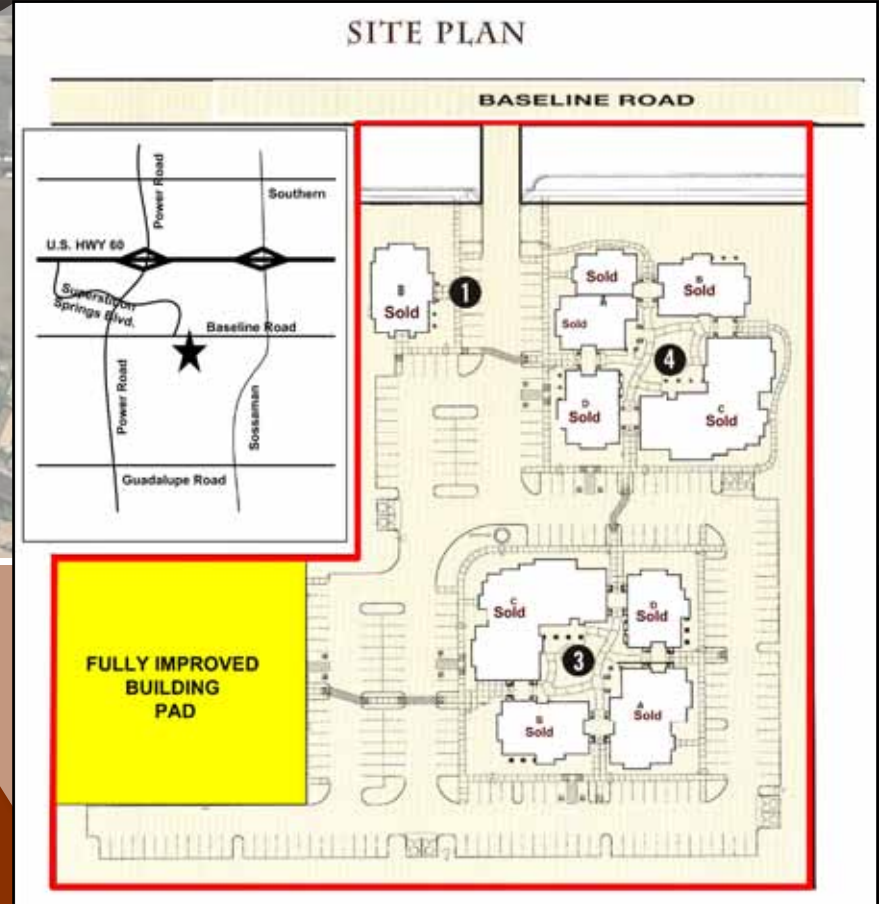


± 72,000 SF Fully Improved Building PAD

Siena Springs 7217-7233 E. Baseline Rd | Mesa, AZ



Features

- ± 72,000 SF Fully Improved Building PAD
- Buildable Up to ± 18,000 SF
- Improvements to Site:
 - Water
 - Sewer
 - Utilities to Site
 - Electric
 - Fire
 - Retention Already Provided
 - Curb & Gutter
 - Landscape Provided

For More Information,
Please Contact:

Tyson Breinholt
D: 480.966.7513
M: 602.315.7131
tbreinholt@cpiaz.com

Eric Jones
D: 480.966.8671
M: 602.291.9400
ejones@cpiaz.com



Locally Owned. Globally Connected.

TEMPE: 2323 W. University Drive, Tempe, AZ 85281 | 480.966.2301
SCOTTSDALE: 7025 N. Scottsdale Rd., Suite 220, Scottsdale, AZ 85253 | www.cpiaz.com

The information contained herein has been obtained from various sources. We have no reason to doubt its accuracy; however, J & J Commercial Properties, Inc. has not verified such information and makes no guarantee, warranty or representation about such information. The prospective buyer or lessee should independently verify all dimensions, specifications, floor plans, and all information prior to the lease or purchase of the property. All offerings are subject to prior sale, lease, or withdrawal from the market without prior notice.