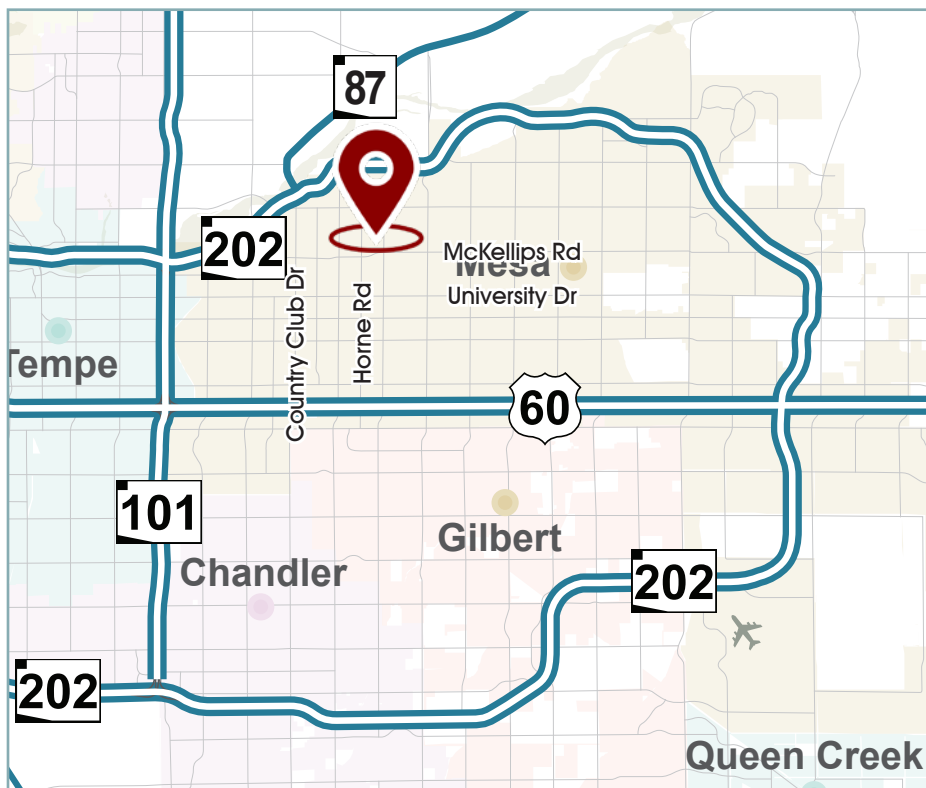


# 855 East Brown Road

Mesa, AZ 85203

**SALE/LEASE OPPORTUNITY**

Turn-Key Office/Medical Condo Available



## Property Highlights

- Suite 10: ±1,353 SF
- Reception
- 2 Offices
- 4 Exam Rooms
- Break Room
- 2 Restrooms
- Located at Stapley & Brown
- Frontage on Brown Rd
- Parcel: 137-09-200F
- 20 Spaces
- Zoning: RM-4
- **52% Ownership in the Building**

**SALE PRICE: \$199,000**

**LEASE RATE: \$13.50 M/G**

**Tyson Breinholt**

D 480.966.7513

M 602.315.7131

tbreinholt@cpi.az.com

The information contained herein has been obtained from various sources. We have no reason to doubt its accuracy; however, J & J Commercial Properties, Inc. has not verified such information and makes no guarantee, warranty or representation about such information. The prospective buyer or lessee should independently verify all dimensions, specifications, floor plans, and all information prior to the lease or purchase of the property. All offerings are subject to price change, prior sale, lease, or withdrawal from the market without prior notice. Effective: 07 09 19



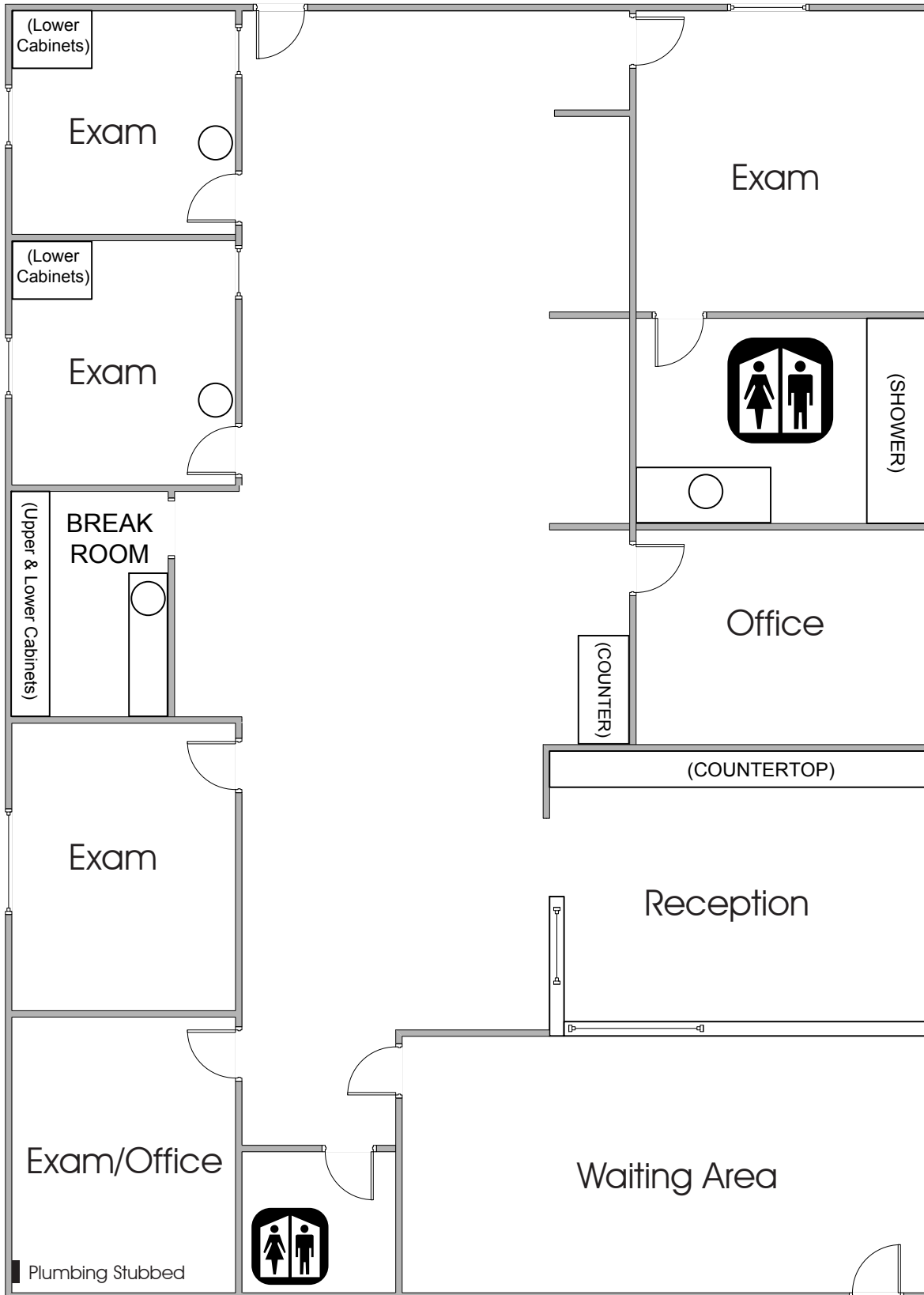
**COMMERCIAL PROPERTIES INC.**

Locally Owned. Globally Connected. CORFAC International

TEMPE: 2323 W. University Drive, Tempe, AZ 85281 | 480.966.2301  
SCOTTSDALE: 8777 N. Gayney Center Dr., Suite 245, Scottsdale, AZ 85258 | www.cpi.az.com

# 855 East Brown Road Mesa, AZ 85203

**SALE/LEASE OPPORTUNITY**  
Turn-Key Office/Medical Condo Available



Floor Plan  
Suite 10  
± 1,353 SF

\*Floorplan not to scale

The information contained herein has been obtained from various sources. We have no reason to doubt its accuracy; however, J & J Commercial Properties, Inc. has not verified such information and makes no guarantee, warranty or representation about such information. The prospective buyer or lessee should independently verify all dimensions, specifications, floor plans, and all information prior to the lease or purchase of the property. All offerings are subject to price change, prior sale, lease, or withdrawal from the market without prior notice. Effective: 07 09 19



**COMMERCIAL PROPERTIES INC.**

Locally Owned. Globally Connected. 



# 855 East Brown Road Mesa, AZ 85203

**SALE/LEASE OPPORTUNITY**  
*Turn-Key Office/Medical Condo Available*



**SUITE 110:  $\pm 1,353$**   
**SALE PRICE: \$199,000**  
**LEASE RATE: \$13.50 M/G**

**Tyson Breinholt**  
D 480.966.7513  
M 602.315.7131  
tbreinholt@cpi.az.com

The information contained herein has been obtained from various sources. We have no reason to doubt its accuracy; however, J & J Commercial Properties, Inc. has not verified such information and makes no guarantee, warranty or representation about such information. The prospective buyer or lessee should independently verify all dimensions, specifications, floor plans, and all information prior to the lease or purchase of the property. All offerings are subject to price change, prior sale, lease, or withdrawal from the market without prior notice. Effective: 07/09/19



**COMMERCIAL PROPERTIES INC.**

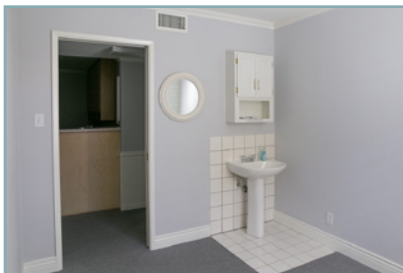
Locally Owned. Globally Connected. CRFAC International

TEMPE: 2323 W. University Drive, Tempe, AZ 85281 | 480.966.2301  
SCOTTSDALE: 8777 N. Gainey Center Dr., Suite 245, Scottsdale, AZ 85258 | www.cpi.az.com



# 855 East Brown Road Mesa, AZ 85203

**SALE/LEASE OPPORTUNITY**  
Turn-Key Office/Medical Condo Available



**SUITE 110: ±1,353**

**Tyson Breinholt**  
D 480.966.7513  
M 602.315.7131  
tbreinholt@cpiaz.com

The information contained herein has been obtained from various sources. We have no reason to doubt its accuracy; however, J & J Commercial Properties, Inc. has not verified such information and makes no guarantee, warranty or representation about such information. The prospective buyer or lessee should independently verify all dimensions, specifications, floor plans, and all information prior to the lease or purchase of the property. All offerings are subject to price change, prior sale, lease, or withdrawal from the market without prior notice. Effective: 07 09 19



**COMMERCIAL PROPERTIES INC.**

Locally Owned. Globally Connected. CRFAC International

TEMPE: 2323 W. University Drive, Tempe, AZ 85281 | 480.966.2301  
SCOTTSDALE: 8777 N. Gayney Center Dr., Suite 245, Scottsdale, AZ 85258 | www.cpiaz.com